

Petroleum Energy Complex

**It's a Petroleum Energy Complex,
There's no one to blame, 'cause Oil's the game
We're playing for World Domination
Forget heart and soul, 'cause power's the goal**

**Time to stop the strike and reach your potential
Go back to your schools, and live by the rules
So you can be the next generation
To take on the role, 'cause money's the goal**

**Oh, what a hopeless case you've made!
No one really cares
Oh, won't you stop this masquerade?
You can't win this game**

**Because the way that it is,
Is the way that it's been
And the way it will be -
For all eternity ...**

INSTRUMENTAL BREAK

**It's a Petroleum Energy Complex,
There's no one to blame, 'cause Oil's the game
We're playing for World Domination
Forget heart and soul, 'cause power's the goal**

**Time to stop the strike and reach your potential
Go back to your schools, and live by the rules
So you can be the next generation
To take on the role, 'cause money's the - goal!**

Petroleum Energy Complex

Arranged by Steve Riffkin

David Gordon

Vocals

Piano

8va Basso

Electric Bass

D- /C Bb D-/A G- Bb/Ab

VERSE

Vox.

Pno.

Bs.

A7+5 D-

It's a Pet - rol e um e - ner-gy com - plex there's

A7+5 D-

Vox.

Pno.

Bs.

no one to blame 'cause oil 's the game we're

Petroleum Energy Complex/Pg.2



Vox. play ing for world dom i - na - tion for - get heart and soul 'cause

Pno.

Bs.

BRIDGE

Vox. pow er's the goal! Time to Oh! what a hope - less case you've made

Pno.

Bs. Bb

Vox. No one really cares! Oh! won't you

Pno.

Bs. D- G-7 A7+5 Bb

Petroleum Energy Complex/Pg.3

Vox. stop this mas-quer-ade! You can't win this game! be-cause the

Pno.

Bs.

Vox. way that it is is the way that it's been and the way it will be for

Pno.

Bs.

Vox. all e ter ni - ty! It's a Pet ⁹ mo ney's the Goal!!

Pno.

Bs.

Petroleum Energy Complex

Piano

David Gordon

(pno intro) D- /C Bb D-/A

8va Basso

Detailed description: This block contains the first four measures of the piano introduction. The music is in 4/4 time with a key signature of one flat (Bb). Measure 1 is a whole rest in the treble clef and a quarter rest in the bass clef. Measure 2 features a D- chord in the treble and a bass line starting on Bb. Measure 3 features a /C chord in the treble and a bass line starting on C. Measure 4 features a Bb chord in the treble and a bass line starting on Bb. The bass line consists of eighth notes: Bb, A, G, F, E, D, C, Bb.

G-7 Bb/Ab A7+5 D-

Detailed description: This block contains the next four measures of the piano introduction. Measure 5 features a G-7 chord in the treble and a bass line starting on G. Measure 6 features a Bb/Ab chord in the treble and a bass line starting on Ab. Measure 7 features an A7+5 chord in the treble and a bass line starting on A. Measure 8 features a D- chord in the treble and a bass line starting on D. The bass line consists of eighth notes: D, C, B, A, G, F, E, D.

VERSE

(same)

Detailed description: This block contains the first two measures of the verse, which are identical to the first two measures of the piano introduction. Measure 1 is a whole rest in the treble and a quarter rest in the bass. Measure 2 features a D- chord in the treble and a bass line starting on Bb.

Detailed description: This block contains the next two measures of the verse, which are identical to the last two measures of the piano introduction. Measure 3 features a /C chord in the treble and a bass line starting on C. Measure 4 features a Bb chord in the treble and a bass line starting on Bb.

Petroleum Energy Complex/Pg.2

Piano

The first system of the piano score consists of two staves. The right-hand staff (treble clef) features a series of chords, primarily triads and dyads, with some grace notes. The left-hand staff (bass clef) contains a steady eighth-note bass line. The key signature has one flat (Bb).

The second system continues the piano score. It includes a section marked "CHORUS" with a "Bb" chord symbol above it. A repeat sign is present at the end of the system. A circled cross symbol is located above the first measure of this system.

The third system of the piano score features a series of chords in the right hand, with a "D-" chord symbol above the first measure and a "G-7" chord symbol above the final measure. The left hand continues with its eighth-note bass line.

The fourth system of the piano score begins with an "A7+5" chord symbol above the first measure, followed by a "Bb" chord symbol above the second measure. The right hand plays a sequence of chords, while the left hand maintains the eighth-note bass line.

Petroleum Energy Complex/Pg.3

Piano

D- G-7 A7+5

Musical notation for the first system, measures 1-3. Measure 1 has a D- chord. Measure 2 has a G-7 chord. Measure 3 has an A7+5 chord. The bass line has a steady eighth-note accompaniment.

D- C

Musical notation for the second system, measures 4-5. Measure 4 has a D- chord. Measure 5 has a C chord. The bass line continues with eighth notes.

Bb G-7 A7+5

Musical notation for the third system, measures 6-8. Measure 6 has a Bb chord. Measure 7 has a G-7 chord. Measure 8 has an A7+5 chord. The system ends with a double bar line.

A7+5 D-9 (6)

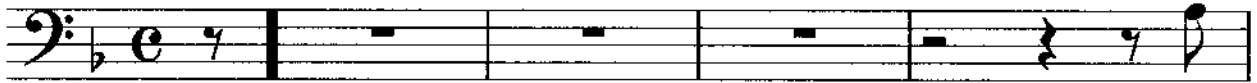
Musical notation for the fourth system, measures 9-11. Measure 9 has an A7+5 chord. Measure 10 has a D-9 (6) chord. Measures 10 and 11 are empty staves.

Petroleum Energy Complex

Bass/Guitar

David Gordon

(piano intro, shuffle feel)



VERSE



Bridge



Petroleum Energy Complex/Pg.2

D- G-7 A7+5

D- C

Bb G-7 A7+5 back to VERSE

A7+5 D-9 (6)